

# North American Pairs (NAP)

Date: June 1-August 31

## Masterpoints:

- Club qualifying games 50/50 red and black at sectional rating
- District finals award gold for section firsts and overalls. Flight C is 25% gold for overalls. Other masterpoints in all flights are red.

Flights: A (Open), B (0-2000), C (0-500 Non-Life Masters)

**Eligibility for Flights B & C is determined  
by the player's master point holding on June 1, 2010**

District winners in each flight recognized on web site

Final: Spring 2011 NABC: Louisville, Kentucky

A highly prestigious "grass roots" event, the North American Pairs starts at the club level in June, July and August. Club-level qualifications may be earned at any club in any unit in any district. A player may qualify as often as desired with as many different partners as desired.

**Unit & District 13 Finals are combined into a one day Saturday, September 11, 2010.**

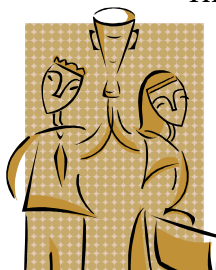
At the district final, both players must have qualified at the club level and must be members of the parent district. A fixed amount prize will be awarded in all flights as follows:

1. In districts with three qualifiers, the 1st place qualifiers will receive \$700 per person and the 2nd place qualifiers will receive \$300 per person. The 3rd place qualifiers will be invited to participate in the national level finals, but will not receive any prize.
2. No individual may collect two concurrent prizes.

The monetary award will be available on site at the NABC.

Qualifiers must play in the national level event until eliminated to receive the award.

There will be no entry fee for the national level of the event.



The District 13 Final will be held accordingly:

**Saturday, September 11, 2010**

**Wisconsin Exposition Center, Hall C**

**(please note change!!)**

**8200 W. Greenfield Avenue, West Allis, WI**

**Session 1 of 2 at 12:00 p.m. Session 2 of 2 TBA**

**Qualifying results will be posted on the  
Website ([www.acbl-district13.org](http://www.acbl-district13.org)) as available.**

**Information must be submitted by September 4, 2010 to  
Suzi Subeck, e-mail address: [stansubeck@prodigy.net](mailto:stansubeck@prodigy.net) Phone: (847) 509-0311**

**Tournament Chair: Sandy O'Brien, [sandy@jim-obrien.com](mailto:sandy@jim-obrien.com)  
(262) 781-0700 (office) or (414) 303-7417 (cell)**

**From The North**

Take I43 South to I94 West. Go approximately 6 miles and. take the 84th St. Exit. Turn left (south) on to 84th St. Go approximately ¼ mile to State Fair Park. For public parking please enter at Gate #5 or Gate #4.

**From Chicago and other points south**

Take I94 North to I894 Bypass. Take the I894 bypass to Greenfield Avenue Exit. Go right (East) on Greenfield Ave. Take Greenfield Avenue to 84th St to enter at Gate # 4 or take Greenfield Ave. to 79th St and turn left to enter at Gate #1.

**From West.**

Heading East on I94, take the 84th St. Exit. Turn right (south) onto 84th St. to Greenfield Ave. Turn left on Greenfield Ave (East) to 79th St. and turn left to enter at Gate #1.

**From the East**

Heading West on I94, take the 84th St. Exit. Turn left (south) onto 84th Street continue to Greenfield Ave. Turn left on Greenfield Avenue (east) to 79th Street and turn left to enter at Gate #1.

**PARKING**

**General Public**

The parking rate for the general public is \$5.00 per day. Vehicles taking up two spaces will be charged double the normal rate. Overnight parking is not allowed.

